

SILVER BEACH

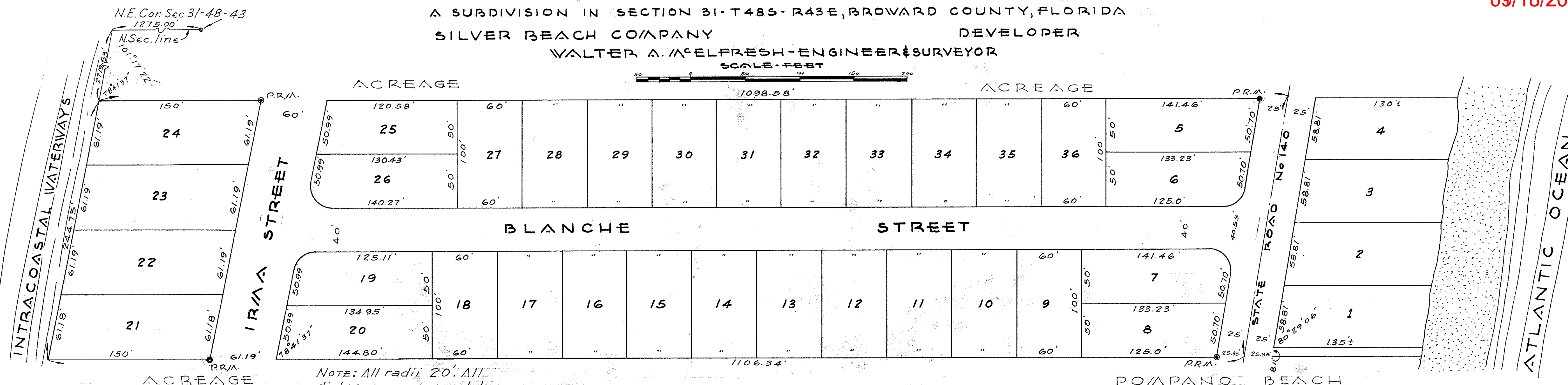
A SUBDIVISION IN SECTION 31-T48S-R43E, BROWARD COUNTY, FLORIDA

SILVER BEACH COMPANY

DEVELOPER

WALTER A. McELFRESH-ENGINEER & SURVEYOR

SCALE - FEET



Note: All radii 20'. All distances measured to tangent intersections.

POMPANO BEACH

DEDICATION

STATE OF FLORIDA ss.
COUNTY OF BROWARD

Know all men by these presents that the SILVER BEACH COMPANY, a corporation operating under the laws of the State of Florida, the owner of the lands shown and included on this plat, has caused said lands to be subdivided and platted in the manner shown hereon, said subdivision to be known as "SILVER BEACH"

All Streets and Roads are hereby dedicated to the perpetual use of the public for proper purposes, reserving unto "SILVER BEACH COMPANY," a corporation, its successors and assigns, the reversion or reversions whenever any of the same may be discontinued by law.

In witness whereof, SILVER BEACH COMPANY, a corporation, has caused this instrument to be signed in its name by its President and its corporate seal to be affixed and attested to by its Secretary this 15th day of October A.D. 1946.

SILVER BEACH COMPANY
by Blanche W. Morris President
Irma Bennett Secretary

STATE OF FLORIDA ss.
COUNTY OF BROWARD

I HEREBY CERTIFY that on this day personally appeared before me, an officer duly authorized to administer oaths and take acknowledgements, Blanche W. Morris and Irma Bennett as president and secretary-treasurer of SILVER BEACH COMPANY, a corporation, and they acknowledged before me that they executed the foregoing dedication of the plat of SILVER BEACH as such officers of said corporation, in the name of said corporation being duly authorized by said corporation so to execute said dedication, and that said dedication is the act and deed of said corporation for the purpose therein expressed.

Witness my hand and official seal at Ft Lauderdale, Broward County, Florida this 15th day of October A.D. 1946.

J. F. Alexander
NOTARY PUBLIC
My Commission expires Sept. 23, 1948

STATE OF FLORIDA ss.
COUNTY OF BROWARD

I hereby CERTIFY that to the best of my knowledge and belief, the plat hereon shown is a true and correct representation of the lands platted, and that permanent reference monuments have been set as indicated by P.R.M.

Walter A. McElfresh
Registered engineer no. 1630
Registered land surveyor no. 29
State of Florida.

STATE OF FLORIDA ss.
COUNTY OF BROWARD

I hereby CERTIFY that the attached plat complies with An Act TO REGULATE THE MAKING AND FILING FOR RECORD OF MAPS AND PLATS IN THE STATE OF FLORIDA approved by the Governor the eleventh of June, 1925

John Cabot
CLERK OF THE CIRCUIT COURT

STATE OF FLORIDA ss.
COUNTY OF BROWARD

This instrument filed for record this 30th day of Oct A.D. 1946, and recorded in book 22 of plats on page 2 of Record

Ted Cabot
Clerk of the Circuit Court
By Dorothy Adams

